



## SUMOstar™ Gene Fusion Technology for Secretory Expression in Mammalian Cells

NEW METHODS FOR ENHANCING FUNCTIONAL PROTEIN  
EXPRESSION AND PURIFICATION IN MAMMALIAN CELLS

### White Paper

June 2007

LifeSensors Inc.  
271 Great Valley Parkway  
Malvern, PA 19355

[www.lifesensors.com](http://www.lifesensors.com)  
[techsupport@lifesensors.com](mailto:techsupport@lifesensors.com)  
[sales@lifesensors.com](mailto:sales@lifesensors.com)  
610.644.8845 (phone)  
610.644.8616 (fax)

# SUMOstar™ Gene Fusion Technology

## NEW METHODS FOR ENHANCING FUNCTIONAL PROTEIN EXPRESSION AND PURIFICATION IN MAMMALIAN CELLS

### Introduction

Expressing and purifying large quantities of functional properly folded protein is a bottleneck in structural and functional genomic studies. Expression difficulties typically include poor yield and formation of insoluble aggregates. These issues compel scientists to use gene fusion technologies to increase protein expression. Gene fusion systems such as glutathione-S-transferase (GST), thioredoxin (Trx), and maltose binding protein (MBP), are hampered by the time-consuming and inefficient process to remove the fusion tag. The proteases used to remove these tags (including thrombin, EK, and TEV protease) recognize short degenerate primary sequences, and unfortunately often cleave within the recombinant protein. These protein fusion systems are also hampered by poor protein folding capacity, resulting in formation of improperly folded, inactive proteins that aggregate as insoluble inclusion bodies.

The small ubiquitin-related modifier (SUMO) system introduction provides a solution to many problems encountered when using other gene fusion systems. SUMO is a ubiquitin family protein that has several known cellular functions, including enhancing the stability of proteins to which it binds. The SUMO system increases expression levels of many different proteins and provides distinct advantages over other gene fusion systems for several reasons:

1. SUMO increases solubility and stability of recombinant proteins more than other fusion tags.
2. A highly specific, stable, and active SUMO protease is available for efficient fusion tag cleavage and subsequent purification of the recombinant protein.
3. Native N-termini of recombinant proteins are preserved following SUMO protease cleavage.

Furthermore SUMO protease recognizes the tertiary SUMO structure with high specificity, thereby never cleaving within the protein of interest.

The SUMO fusion system sets itself apart from other fusion systems by enhancing the solubility, stability, and functionality of many proteins. Unfortunately, SUMO proteases are expressed in eukaryotic systems, limiting the utility of this fusion tag (until now) to expression and purification of recombinant proteins in prokaryotes. This paper describes the new SUMOstar fusion technology, which allows scientists to reap the benefits of SUMO technology while generating functional proteins in eukaryotic expression systems.

## SUMOstar Gene Fusion Technology

### SUMO Fusions Protein are Cleaved in Eukaryotic Cells: SUMOstar Technology Rationale

Recombinant protein expression in eukaryotic systems provides the proper protein folding and post-translational modification environment required for functional eukaryotic protein production. Unfortunately, endogenous SUMO protease activities preclude the use of existing SUMO fusion systems in eukaryotes. Figure 1 data indicate that a SUMO-GFP fusion expressed in eukaryotic cells is rapidly cleaved by endogenous SUMO protease activity. However, use of a new SUMO family tag—termed SUMOstar—results in greatly enhanced expression of SUMOstar tagged GFP with very little cleavage by endogenous SUMO proteases (Figure 1).

### Introduction of SUMOstar Technology: The Concept

LifeSensors has taken an exciting new approach to exploit the solubility, expression, and purification advantages of the SUMO system in eukaryotic hosts. The SUMOstar tag was designed with a mutated SUMO protease cleavage site, which is not hydrolyzed by endogenous SUMO proteases. Remarkably, the SUMOstar tag has the same solubility, chaperoning, and expression enhancing advantages in eukaryotes as the previous SUMO fusions exhibit in prokaryotes. A SUMOstar protease was also engineered to specifically cleave the SUMOstar tag and generate functional proteins with their native N-termini in all expression hosts.

### SUMOstar Expression in Mammalian Cells Using a pM-SUMOstar System:

Mammalian cells were chosen for protein expression because of their ability to properly fold large amounts of functional eukaryotic proteins. Figure 2 outlines the cloning paradigm for expression of SUMOstar-tagged protein constructs in HEK-293 cells. cDNAs of interest are cloned into the pM-SUMOstar vector in-frame with the Kappa-6XHis-SUMOstar tag and expressed under the control of the CMV promoter. Next, the constructs were transfected into HEK-293 cells, and the cell media and pellet were analyzed using western blot analysis.

### SUMOstar Produces Enhancement of Functional Proteins in Both Eukaryotes and Prokaryotes:

A key advantage of the SUMOstar tag is its resistance to cleavage by endogenous eukaryotic SUMO proteases. However, for overall system versatility a comparison between SUMO and SUMOstar tags was made in prokaryotic cells. SUMO-GFP and SUMOstar-GFP were expressed in *E. coli* Rosetta pLysS strains. After induction cells were lysed and separated into soluble and insoluble fractions. Equal amounts of protein were resolved on SDS-PAGE and stained with Coomassie blue (Figure 3). These data demonstrate that SUMOstar fusion produces as much or more

### SUMO Tag is Cleaved in Eukaryotes While SUMOstar Tag is Not Cleaved

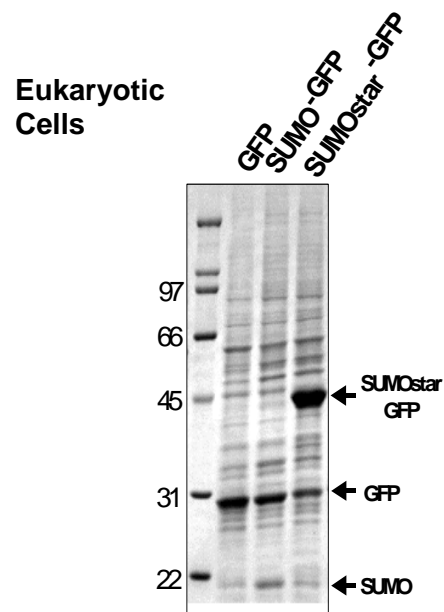


Figure 1.

### Mammalian SUMOstar Expression Vector

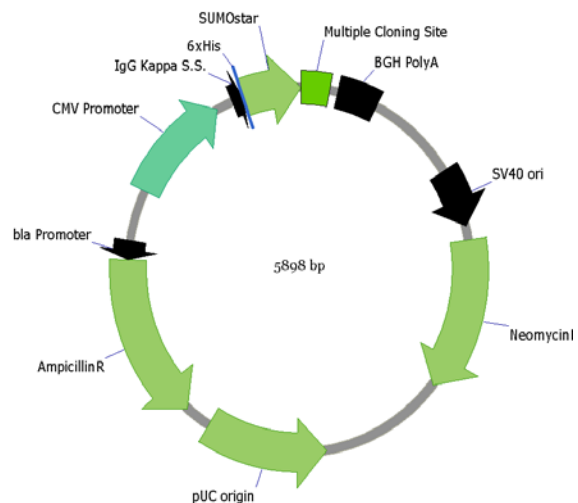


Figure 2.

GFP as the SUMO fusion. These data indicate that the SUMOstar fusion system is also useful for protein expression and solubility enhancement in prokaryotes.

### The SUMOstar Tag is Rapidly and Robustly Cleaved by SUMOstar Protease, Generating Proteins with Desired N-Termini:

SUMOstar protease is a very efficient and robust enzyme, which specifically cleaves the SUMOstar tag from the recombinant protein of interest. Equal amounts of Ni-NTA purified His-SUMOstar-GFP were digested for 1hr. at 30 °C with increasing concentrations of SUMOstar protease and resolved using SDS-PAGE (Figure 4). SUMOstar protease efficiently and completely cleaves the 6XHis-SUMOstar tag from the protein of interest. Importantly, the SUMO systems (including SUMOstar) have the unique ability to produce purified functional proteins with native N-terminal amino acids intact following protease cleavage.

### SUMOstar Enhances Secreted Protein Expression in Mammalian Cells:

Two examples were used to demonstrate the increased expression and secretion of difficult to express proteins. In the first experiment, HEK-293 cells were transiently transfected with various constructs of the human GzmB using a standard protocol. Cell media were collected after 48 hours, and aliquots were analyzed by western blot using antibodies against GzmB, followed by IgG-HRP conjugate. Samples visualized using chemiluminescence. The data (Figure 5) indicate that SUMOstar robustly enhanced GzmB expression and secretion over the His tag alone.

In a second example, HEK-293 cells were transiently transfected with various constructs of the mouse PLA2 using a standard protocol. Cell media were collected after 48 hours, and aliquots were analyzed by western blot using antibodies against HIS-tag, followed by IgG-HRP conjugate. Samples were visualized using chemiluminescence. The data shown in Figure 6 demonstrate that SUMOstar robustly enhanced the expression of secreted PLA2 protein. Subsequent analysis revealed that PLA2 was highly active (Data Not Shown). Overall, SUMOstar is a powerful system for enhancing yield and solubility of secreted functional proteins in mammalian cells.

### SUMOstar Technology Provides an Easy Method for Purifying Untagged Eukaryotic Proteins:

A 6XHis tag is combined with the SUMOstar fusion tag to facilitate protein purification using Ni-NTA column chromatography. Four Steps to Pure, Untagged Functional Protein: Protein purification and fusion tag removal is an easy and efficient process using the SUMOstar system. The process involves an initial purification of 6XHis-SUMOstar-Protein from the crude cell lysate using a Ni-NTA column. The tagged protein can then either be: 1) directly used in an assay or 2) cleaved with SUMOstar protease to remove the fusion tag. Both SUMOstar protease and the cleaved tag contain a 6XHis

### SUMOstar Expression in Prokaryotes

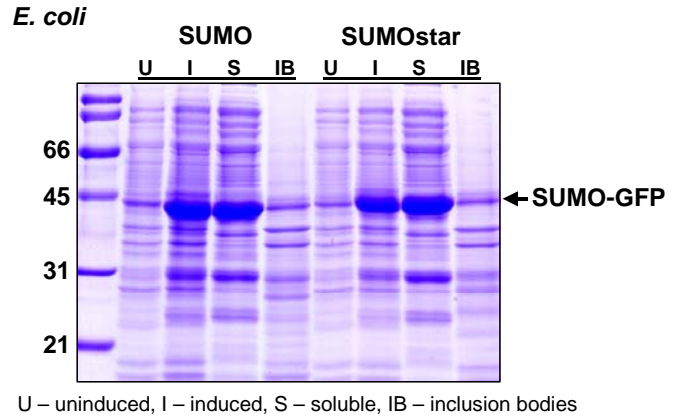


Figure 3.

### SUMOstar Protease Efficient Cleavage

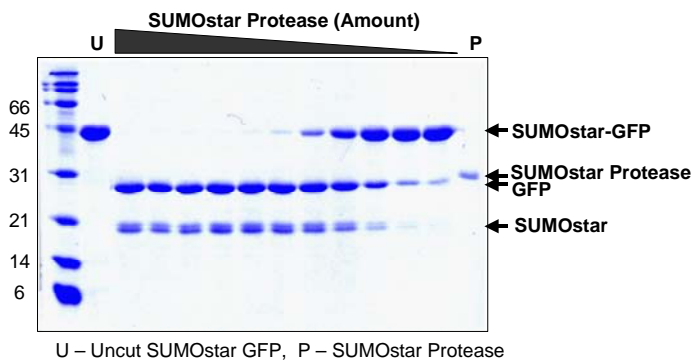


Figure 4.

### SUMOstar Enhances Expression and Secretion of Proteins

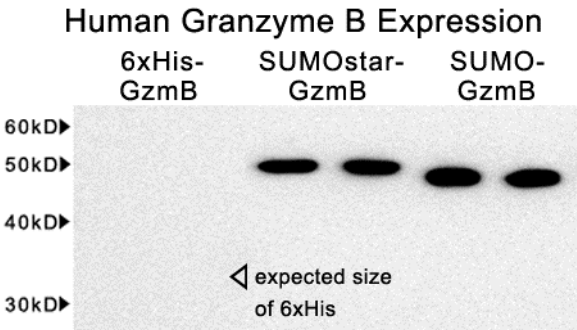


Figure 5.

moiety; therefore, purified untagged protein is obtained by running the protease reaction on a second Ni-NTA column (to bind the tag and protease) and collecting the flow through (protein).

### SUMOstar: A Versatile Protein Expression and Purification Tool:

The SUMOstar system is your answer to protein expression and purification questions. SUMOstar, unlike other fusion tags, produces higher yield, and more stable, soluble, and functional proteins. Unique to the SUMO systems are: 1) generation of native N-terminal amino acids (except proline) after fusion tag cleavage and 2) a specific protease that recognizes a tertiary structure and never cleaves within the protein of interest. While SUMO fusion proteins produce outstanding enhancement of proteins in prokaryotic hosts, SUMOstar brings the SUMO expression advantages to eukaryotes. SUMOstar makes protein expression and purification better and simpler and allows you to focus on the other questions.

The SUMOstar and SUMO fusion technology platforms continue to develop, as scientists search for improved processes to express and purify functional proteins. Our methodologies and insight also expands and evolves on a daily basis. Please send all correspondences to the author and check our website ([www.lifesensors.com](http://www.lifesensors.com)) for recent developments and frequent updates.

## Frequently Asked Questions

Q: Does LifeSensors have patent(s) on this technology?

A: LifeSensors has worldwide patents and patent applications on the use of SUMOstar-fusion and applications of the SUMOstar tag and SUMOstar proteases

Q: Is LifeSensors marketing a vector, a specific protease, or kits containing all necessary components?

A: LifeSensors has developed a complete SUMOstar kit for eukaryotic and prokaryotic systems. LifeSensors, Inc. offers a broad range of services and support for various applications of the SUMOstar technology.

Q: How specific is the enzyme?

A: SUMOstar protease is a highly specific enzyme – it recognizes the tertiary SUMOstar structure. SUMOstar protease consistently cleaves at the junction between SUMOstar tag and the protein of interest to deliver a protein with its native N-terminus.

Q: Will commercially available SUMO Protease 1 cleave the SUMOstar tag?

A: No, the SUMOstar tag is only cleaved by SUMOstar Protease.

## Purification of SUMOstar Constructs

### Mouse Group X sPLA2 Expression

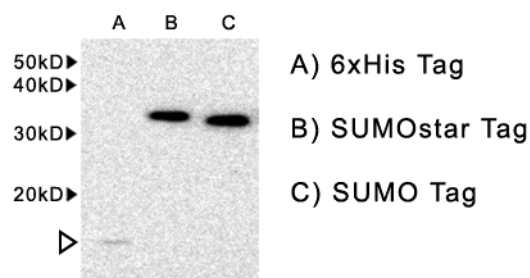


Figure 6.

Q: Is SUMOstar protease as robust as commercially available SUMO protease 1?

A: SUMOstar protease is highly active and the cleavage rate is very similar to SUMO protease 1. Cleavage by SUMO protease (like SUMO protease 1) generates the native N-terminal amino acid (except for proline).

Q: What is the size of SUMOstar?

A: SUMOstar is 100aa or 11.5 kDa. However, it migrates aberrantly at approximately 20 kDa in an SDS-polyacrylamide gel.

Q: Will SUMO antibody detect SUMOstar fusions?

A: SUMO antibody can potentially detect SUMOstar fusions; however for the greatest detection we recommend using SUMOstar antibody that has been specifically engineered to provide the greatest detection for SUMOstar fusions.

This document is the property of LifeSensors Inc. The proprietary ideas mentioned in the document are the subject of patent filings. This document may not be copied or distributed to others except to the relevant staff of your company. If you are not the intended recipient, you are hereby notified that any disclosure, copy or distribution of this information, or taking of any action in reliance on the contents of this transmission is strictly prohibited. Copyright © 2007 LifeSensors Inc.