

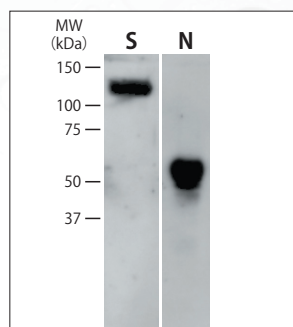
Human polyclonal antibody prepared from serum of SARS-CoV-2 convalescent

Here, EVEC Inc. prepared immunoglobulin fraction from serum of SARS-CoV-2 convalescent.

The product is categorized into human polyclonal antibody, and DOES NOT include any infectious materials such as virus particles because of filtration by 0.22 μ m membrane.

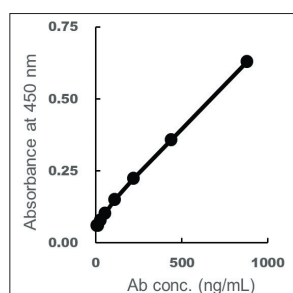
Of course, as the product is consisted of total immunoglobulin that purified by Protein A affinity column, various Igs are contained, including anti-Spike protein and anti-Nucleocapsid etc..

Please use this product for research and elucidation the pathology of COVID-19 symptom.



Western blot

Western blot analyses of this product against SARS-CoV-2 S-protein (S) or N-protein (N)



ELISA

Standard curve of this product against SARS-CoV-2 Spike protein

Product Name	Type	Application	Catalog Number	PKG Size
Total Ig of SARS-CoV-2 convalescent	Human-Poly	WB, ELISA	EVCI-001-0050	50 μ g
			EVCI-001-0100	100 μ g
			EVCI-001-0500	500 μ g

EVEC, Inc. Kobe Laboratory

Kitakan 404 Kobe International Business Center 5-5-2,
Minatojima minamimachi, Chuo-ku, Kobe-shi, Kobe
Hyogo, 650-0047 JAPAN
E-mail: kobe@evec.jp Web: <https://www.evec.jp/>

Distributor

NACALAI TESQUE, INC.

498 Higashitamaya-cho, Nijo Karasuma,
Nakagyo-ku, Kyoto 604-0855 JAPAN
Phone: +81 75 251 1730
www.nacalai.com