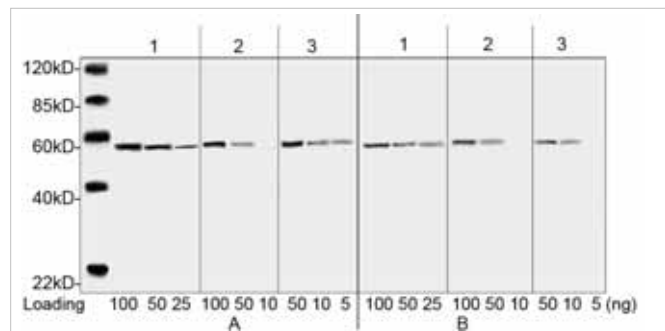


Anti-DYKDDDDK(Mouse IgG2b-κ), Mono

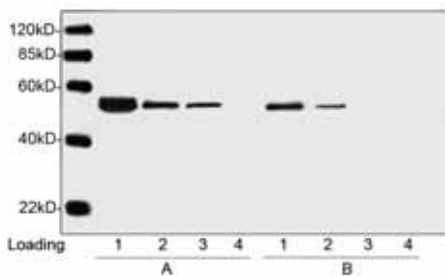
DYKDDDDK peptide is a small component of the epitope which does not appear to interfere with the bioactivity or the biodistribution of the recombinant protein. It has been used extensively as a general epitope tag in expression vectors. Anti-DYKDDDDK (Mouse IgG2b-κ) is a high-affinity monoclonal antibody that can bond to same epitope as Sigma's Anti-FLAG® M2 antibody.

Clone : 5A8E5
 Isotype : IgG2b-κ (Mouse)
 Product form : Lyophilized form
 Specificity : Anti-DYKDDDDK recognizes C-terminal, N-terminal and internal tagged fusion proteins.
 Concentration : 0.5 mg/ml, lyophilized with PBS, pH7.4, containing 0.02% sodium azide.
 Immunogen : A synthetic peptide (DYKDDDDK) coupled KLH
 Application : Western Blotting 0.1-1.0 μg/ml
 Immunoprecipitation 1 μg/ml
 Immunofluorescent 1 μg/ml
 ELISA 0.05-0.2 μg/ml

Comparison of Anti-DYKDDDDK(Mouse IgG2b-κ) with Mouse anti-DYKDDDDK Tag mAb (Company S, clone M2, 1 μg/ml) by Western blot.

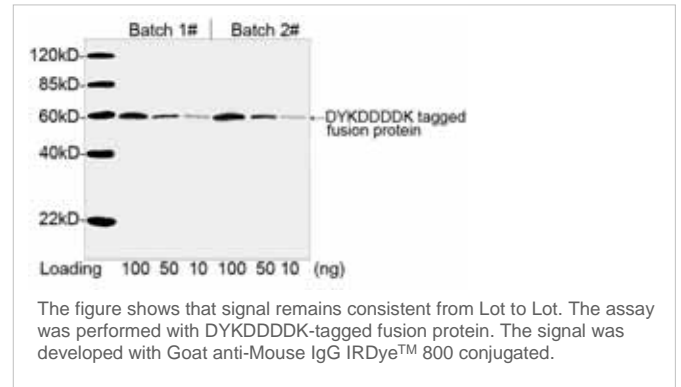


Sample : Lane 1. N-terminal DYKDDDDK-tagged fusion protein
 Lane 2. Internal DYKDDDDK-tagged fusion protein
 Lane 3. C-terminal DYKDDDDK-tagged fusion protein
 Primary Ab : A. Anti-DYKDDDDK(Mouse IgG2b-κ), Mono (5A8E5) 1 mg/ml
 B. Company S, Anti-DYKDDDDK Tag mAb (M2) 1 mg/ml
 Secondary Ab : Goat anti-Mouse IgG IRDye™ 800 Conjugated



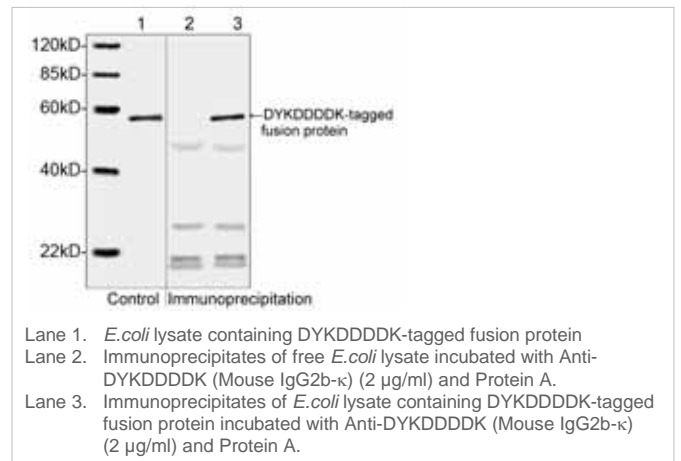
Sample : Lane 1-3. Multiple Tag (Purified) (400 ng, 80 ng, 16 ng)
 Lane 4. 293 cell lysate 10 ml
 Primary Ab : A. Anti-DYKDDDDK(Mouse IgG2b-κ), Mono (5A8E5) 1 mg/ml
 B. Company S, Anti-DYKDDDDK Tag mAb (M2) 1 mg/ml
 Secondary Ab : Goat anti-Mouse IgG IRDye™ 800 Conjugated

Consistent analysis of Batch 1# and Batch 2# of Anti-DYKDDDDK(Mouse IgG2b-κ) by Western Blotting.



The figure shows that signal remains consistent from Lot to Lot. The assay was performed with DYKDDDDK-tagged fusion protein. The signal was developed with Goat anti-Mouse IgG IRDye™ 800 conjugated.

Western Blotting analysis of *E. coli* lysate containing DYKDDDDK-tagged fusion protein and its immunoprecipitates.

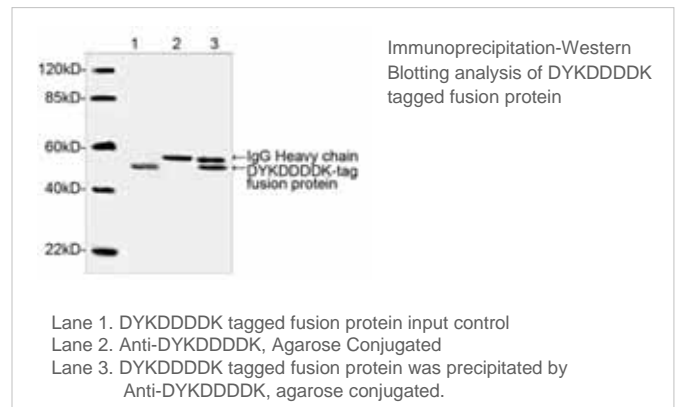


Lane 1. *E. coli* lysate containing DYKDDDDK-tagged fusion protein
 Lane 2. Immunoprecipitates of free *E. coli* lysate incubated with Anti-DYKDDDDK (Mouse IgG2b-κ) (2 μg/ml) and Protein A.
 Lane 3. Immunoprecipitates of *E. coli* lysate containing DYKDDDDK-tagged fusion protein incubated with Anti-DYKDDDDK (Mouse IgG2b-κ) (2 μg/ml) and Protein A.

Anti-DYKDDDDK(Mouse), Monoclonal Agarose Conjugate

Clone : 6H8E4
 Degree of substitution : Approx. 8.5 mg Anti-DYKDDDDK mAb/ml settled resin
 Capacity : > 1 mg/ml settled resin
 Product form : 1x PBS containing 50% glycerol

Immunoprecipitation



Lane 1. DYKDDDDK tagged fusion protein input control
 Lane 2. Anti-DYKDDDDK, Agarose Conjugated
 Lane 3. DYKDDDDK tagged fusion protein was precipitated by Anti-DYKDDDDK, agarose conjugated.

[Click here for inquiry of price and lead time!!](#)